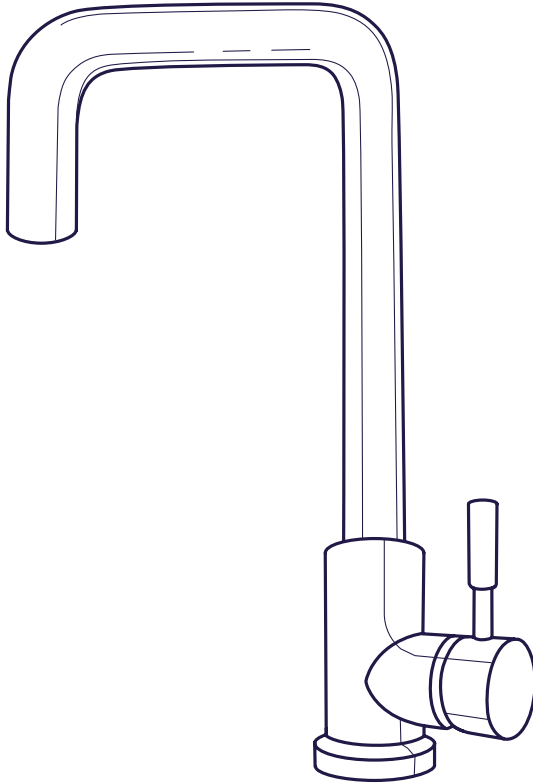


Vented Kitchen Mixer

for Point of Use Water Heaters

Installation Instructions



Model
PMX-100

Vented Kitchen Mixer
for Point of Use Water Heaters



Strong and Durable
304 Stainless Steel Finish



Zero kPa
Open Vented Mixer



High-Rise Swivel Spout

www.kwikot.com



powered by **Haier**

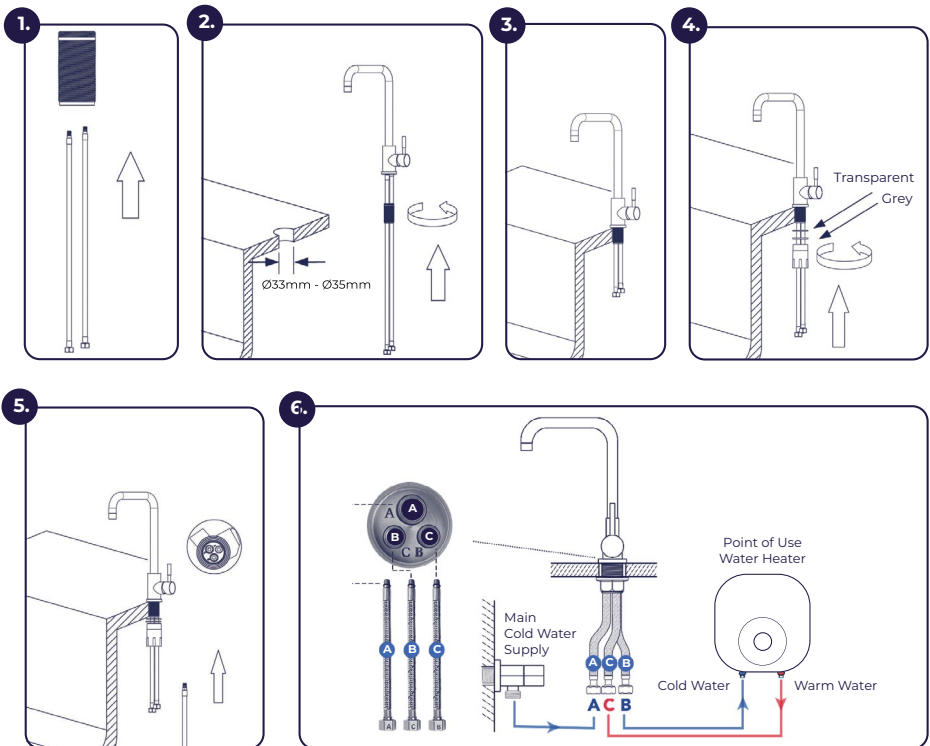
Important

For residential use only. Please read and save these instructions.

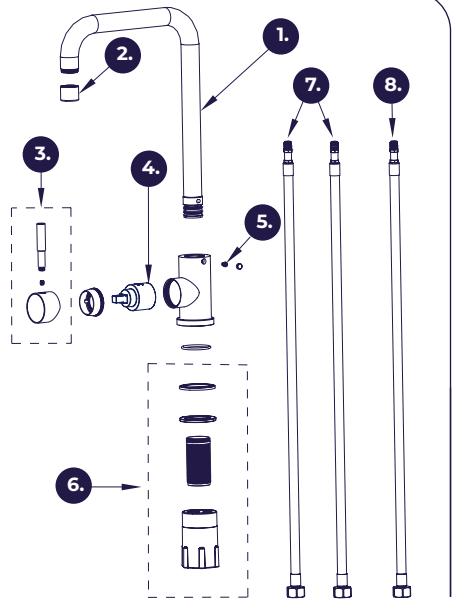
Installer: Leave installation instructions with the homeowner.

Homeowner: Keep installation instructions for future reference.

1. Feed two blue flexi connector hoses through the stainless steel tap bracket/fixing assembly. Before installing the vented mixer, flush water supply pipes thoroughly, then shut off the water supply valves.
2. Fasten the stainless steel leg and then insert and tighten the two blue hoses into ports A and B respectively on the underside of the mixer.
3. Install the vented mixer on the sink or countertop.
4. Tug the transparent gasket, grey plastic gasket and plastic sleeve in a row under the countertop. Then fasten the plastic sleeve.
5. Feed the red flexi connector hose through and tighten into hole C.
6. Connect the blue hose A to the main water supply valve, connect the blue hose B onto the blue inlet of the Point of Use Water Heater and connect the red hose C to the red outlet of the Point of Use Water Heater.



Product Code	Product Description
1. PMX-S100-SP	PMX-100 Spout Assembly
2. PMX-S100-AER	PMX-100 Aerator Assembly
3. PMX-S100-H	PMX-100 Handle
4. PMX-S100-CART	PMX-100 Cartridge
5. PMX-S100-WRKIT	PMX-100 Wrench Kit
6. PMX-S100-FIXASS	PMX-100 Fixing Assembly
7. PMX-S100-BH	PMX-100 Blue Flexi Hose
8. PMX-S100-RH	PMX-100 Red Flexi Hose



Standard Warranty

Kwikot (Haier) SA (Pty) Ltd. warrants that their products will be clear of material and manufacturing defects. Appraisal of the above will be done against ruling manufacturing specifications and standards at the date of manufacture.

Defective product will be repaired or exchanged at **Kwikot's** sole discretion. **Kwikot** shall not be liable for indirect or consequential loss or damage.

The **Kwikot** PMX-100 Vented Mixer carries a 2 year warranty against manufacturing defects (fair wear and tear excluded) and is valid from date of purchase. Proof of Purchase will be required when logging a Service Call with the **Kwikot** Service Department.

Failure due to acid attacks on the stainless steel material, incorrect application of use, abuse and exposure to unsuitable chemicals which could affect and contaminate the Stainless Steel material will not be entertained under this warranty. The unsuitable chemicals include but are not limited to Chlorine and/or acid containing cleaners, household bleach and exposure to saltwater conditions.

Kwikot reserves the right to review any specific case in order to assess the validity of this warranty.

Kwikot has taken a significant step towards enhancing their customer service by introducing new Water Care product registrations. Through this new process, customers and installers can register their water heaters and water care products by scanning the product registration QR code (which can be found on the water heater) via a smart phone or manually entering the information on www.kwikot.com

This registration process enables service agents to access product information promptly, allowing for more efficient handling of warranty claims and a convenient experience for customers. This initiative reflects our unwavering commitment to delivering exceptional service to our valued customers.



To Validate the Warranty
(Please scan QR code and register online)



powered by **Haier**

www.kwikot.com

Support



Warranty and Service Support
za_insure@kwikot.com
0861 594 568



Admin, Marketing and Product Queries
kwikot.marketinginfo@kwikot.com



Sales and Payment Queries
za_salesorders@kwikot.com
011 897 4600



Technical Queries
technical.info@kwikot.com

Branches

Gauteng
3 Aberdeen Road,
Industrial Sites,
Benoni

Western Cape
15 Purdey Road,
Sheffield Business Park,
Philippi, Cape Town

KwaZulu-Natal
814 Peter Close,
Springfield Park,
Durban

Eastern Cape
39-41 Leadwood Crescent,
Fairview,
Port Elizabeth



IEC 60353-5-2-21

IPX4



PLEASE
RECYCLE